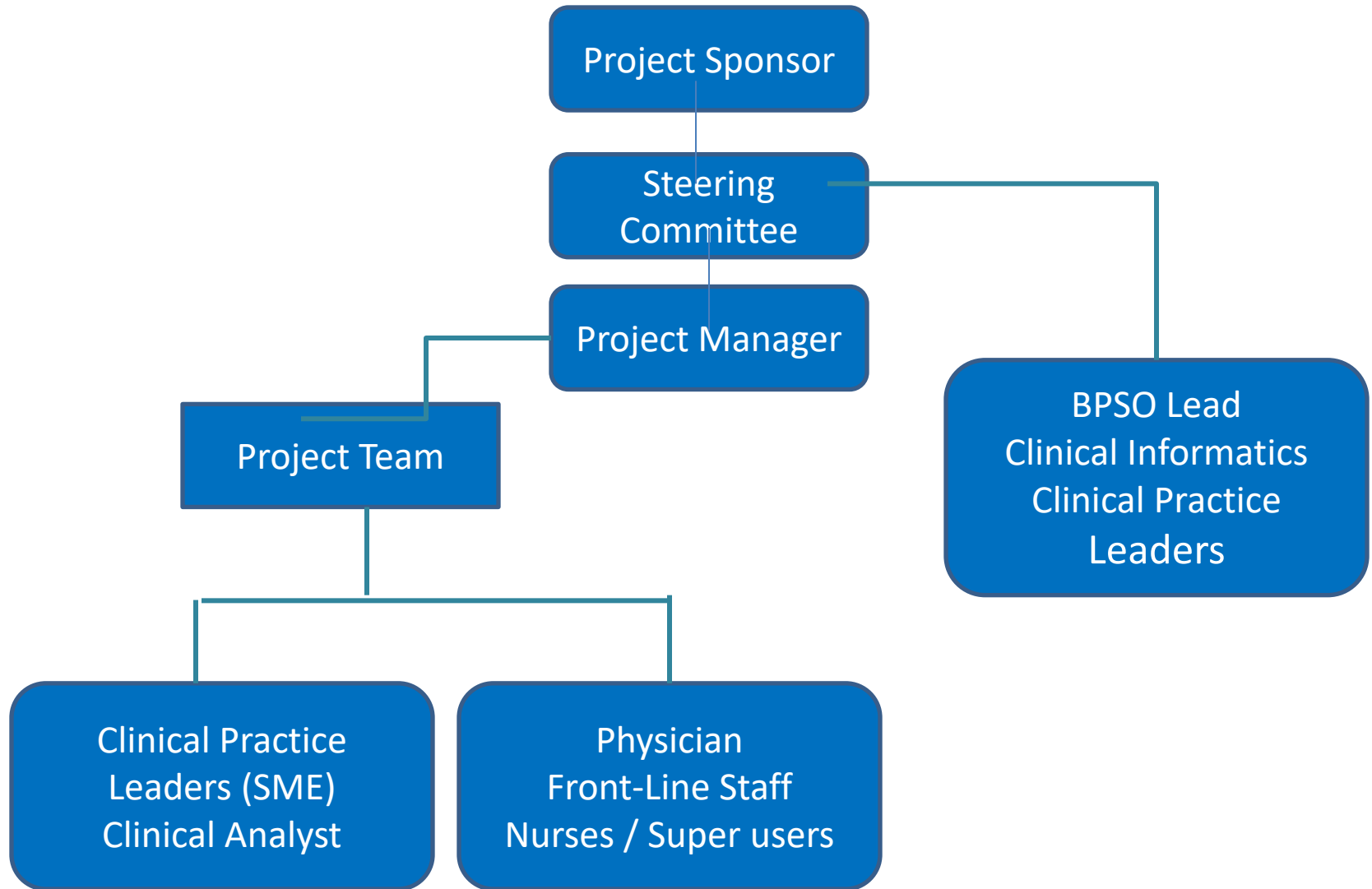


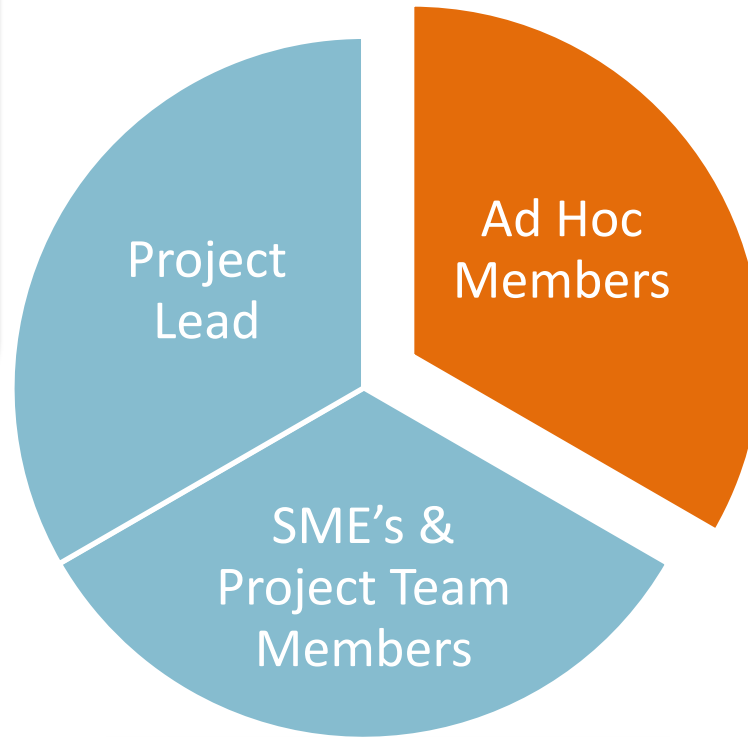
Bayshore's Project Team



Project Team: Chartwell

Key Attributes

- SME
- Organized
- Systematic
- Computer Savvy
- Educator



Possible Ad Hoc Members

- Pharmacist
- Physiotherapist
- Occupational Therapist
- Registered Dietitian
- MD
- Resident
- Family

Standing Team Members

- Registered Staff
- Personal Support Worker
- Skin Care Champion
- Informatics / IT

Project Teams: St Joe's

Project Teams	Clinical Team	Patient Engagement Team	Analytics Team
Membership	<ul style="list-style-type: none"> CI RN APP Specialist Wound Care NP Diabetes Educator Primary Care Nurse (PCN) 	<ul style="list-style-type: none"> Diabetes Educator Primary Care Nurse (PCN) Application Trainer Public Relations 	<ul style="list-style-type: none"> CI RN APP Specialist ICT Analysts Steering
Activities	<ul style="list-style-type: none"> Input on clinical content and process flows Design Validation User acceptance Peer education 	<ul style="list-style-type: none"> Clinical content review Design Patient acceptability Peer education 	<ul style="list-style-type: none"> Design Mapping concepts Extraction process Monitoring Evaluation

Project Teams: Bluewater Health

Professional Practice Supervisors
Clinical Informatics
Wound Care Team
Healthtech Consultants

